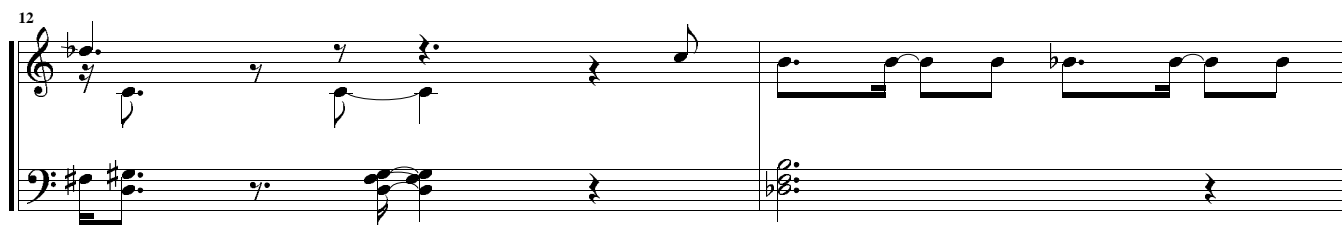
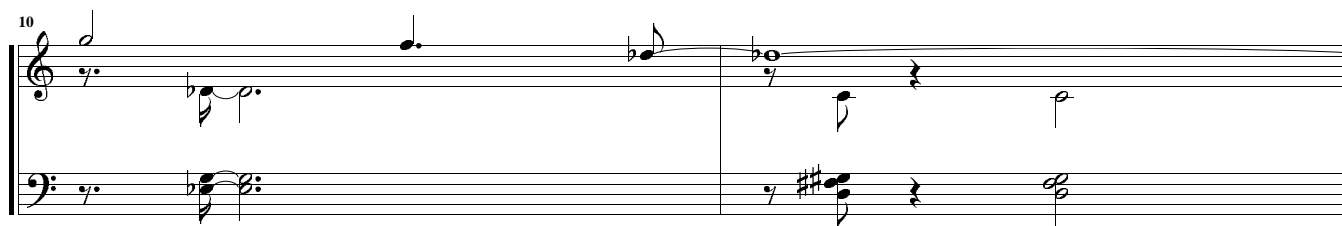
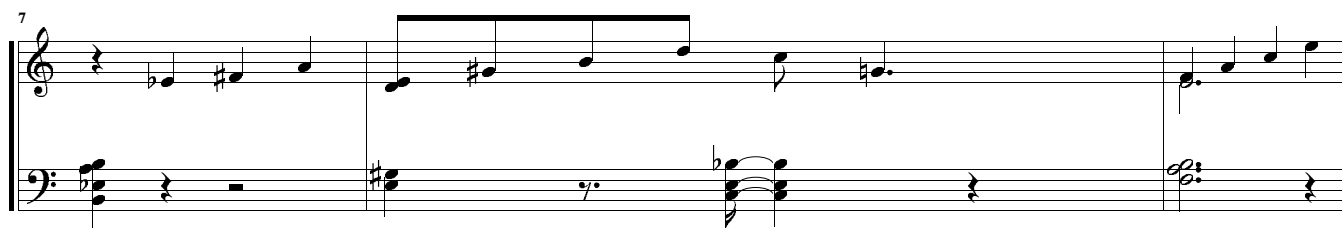
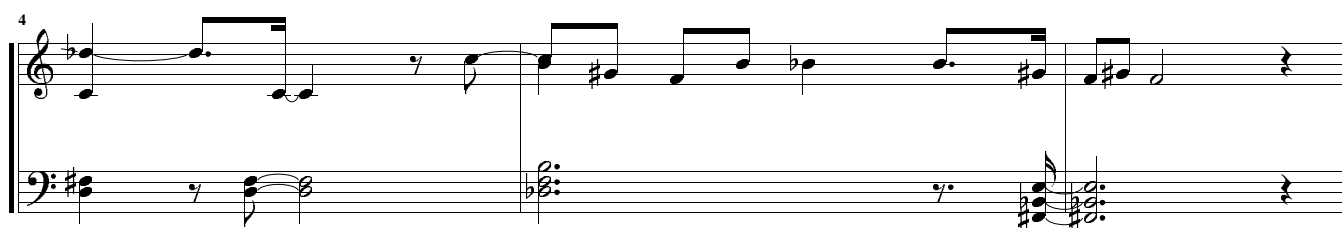
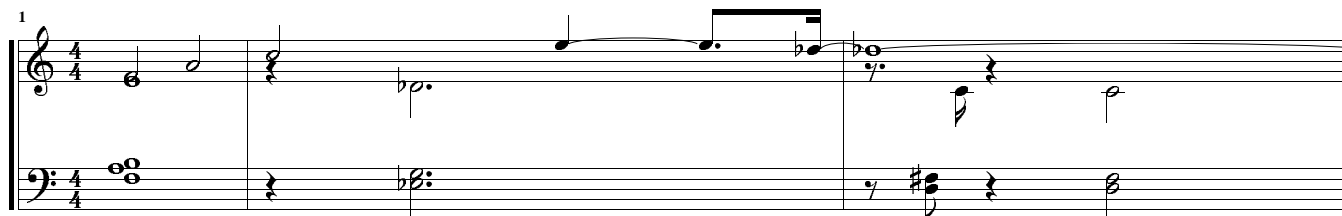


Chet & Gerry

Roberto Andreucci



16

Measures 16 and 17 of a musical score. Measure 16 features a treble clef with a whole rest and a bass clef with a whole note chord of F#4 and C#5. Measure 17 features a treble clef with a half note G4, a quarter note F#4, and a whole rest, and a bass clef with a half note G3, a quarter note F#3, and a whole rest. A double bar line is present after measure 17.

18

Measures 18 and 19 of a musical score. Measure 18 features a treble clef with a half note G4, a quarter note F#4, and a whole rest, and a bass clef with a half note G3, a quarter note F#3, and a whole rest. Measure 19 features a treble clef with a half note G4, a quarter note F#4, and a whole rest, and a bass clef with a half note G3, a quarter note F#3, and a whole rest. A double bar line is present after measure 19.

20

Measures 20, 21, and 22 of a musical score. Measure 20 features a treble clef with a half note G4, a quarter note F#4, and a whole rest, and a bass clef with a half note G3, a quarter note F#3, and a whole rest. Measure 21 features a treble clef with a half note G4, a quarter note F#4, and a whole rest, and a bass clef with a half note G3, a quarter note F#3, and a whole rest. Measure 22 features a treble clef with a half note G4, a quarter note F#4, and a whole rest, and a bass clef with a half note G3, a quarter note F#3, and a whole rest. A double bar line is present after measure 22.

23

Measures 23 and 24 of a musical score. Measure 23 features a treble clef with a half note G4, a quarter note F#4, and a whole rest, and a bass clef with a half note G3, a quarter note F#3, and a whole rest. Measure 24 features a treble clef with a half note G4, a quarter note F#4, and a whole rest, and a bass clef with a half note G3, a quarter note F#3, and a whole rest. A double bar line is present after measure 24.

24

Measures 25 and 26 of a musical score. Measure 25 features a treble clef with a half note G4, a quarter note F#4, and a whole rest, and a bass clef with a half note G3, a quarter note F#3, and a whole rest. Measure 26 features a treble clef with a half note G4, a quarter note F#4, and a whole rest, and a bass clef with a half note G3, a quarter note F#3, and a whole rest. A double bar line is present after measure 26.

25

Measures 27 and 28 of a musical score. Measure 27 features a treble clef with a half note G4, a quarter note F#4, and a whole rest, and a bass clef with a half note G3, a quarter note F#3, and a whole rest. Measure 28 features a treble clef with a half note G4, a quarter note F#4, and a whole rest, and a bass clef with a half note G3, a quarter note F#3, and a whole rest. A double bar line is present after measure 28.

27

Measures 27-28 of a musical score. Measure 27 features a treble clef with a key signature of one flat (B-flat) and a common time signature. The melody consists of eighth notes: B-flat, A, G, F, E, D, C, B-flat. Measure 28 features a bass clef with a key signature of one flat (B-flat) and a common time signature. The melody consists of eighth notes: B-flat, A, G, F, E, D, C, B-flat.

29

Measures 29-30 of a musical score. Measure 29 features a treble clef with a key signature of one flat (B-flat) and a common time signature. The melody consists of eighth notes: B-flat, A, G, F, E, D, C, B-flat. Measure 30 features a bass clef with a key signature of one flat (B-flat) and a common time signature. The melody consists of eighth notes: B-flat, A, G, F, E, D, C, B-flat.

31

Measures 31-32 of a musical score. Measure 31 features a treble clef with a key signature of one flat (B-flat) and a common time signature. The melody consists of eighth notes: B-flat, A, G, F, E, D, C, B-flat. Measure 32 features a bass clef with a key signature of one flat (B-flat) and a common time signature. The melody consists of eighth notes: B-flat, A, G, F, E, D, C, B-flat.